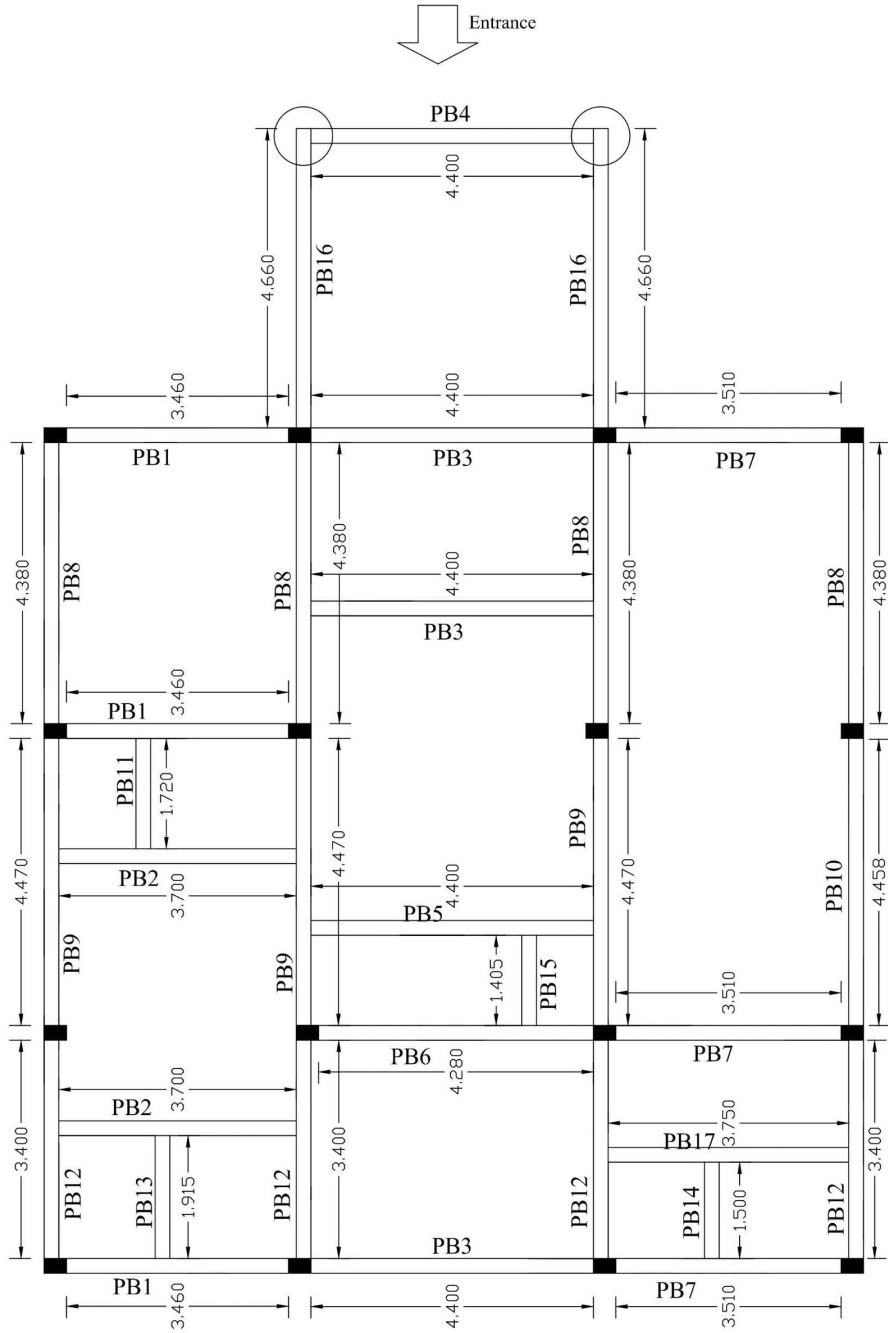


(Drawings having details of Plinth Beam)



Details of Plinth Beam

Sr. No.	Name of Beam	No's	Length	Width	Depth	Top R/F	Bottom R/F	Stirrups
01	PB1	03	3.460	0.230	0.300	2-12mm dia	3-12mm dia	8mm @ 150 c/c
02	PB2	02	3.700	0.230	0.300	2-12mm dia	3-12mm dia	8mm @ 150 c/c
03	PB3	03	4.400	0.230	0.300	2-12mm dia	3-12mm dia	8mm @ 150 c/c
04	PB4	01	4.400	0.230	0.300	2-12mm dia	3-12mm dia	8mm @ 150 c/c
05	PB5	01	4.400	0.230	0.300	2-12mm dia	3-12mm dia	8mm @ 150 c/c
06	PB6	01	4.280	0.230	0.300	2-12mm dia	3-12mm dia	8mm @ 150 c/c
07	PB7	03	3.510	0.230	0.300	2-12mm dia	3-12mm dia	8mm @ 150 c/c
08	PB8	04	4.380	0.230	0.300	2-12mm dia	3-12mm dia	8mm @ 150 c/c
09	PB9	03	4.470	0.230	0.300	2-12mm dia	3-12mm dia	8mm @ 150 c/c
10	PB10	01	4.458	0.230	0.300	2-12mm dia	3-12mm dia	8mm @ 150 c/c
11	PB11	01	1.720	0.230	0.300	2-12mm dia	3-12mm dia	8mm @ 150 c/c
12	PB12	04	3.400	0.230	0.300	2-12mm dia	3-12mm dia	8mm @ 150 c/c
13	PB13	01	1.915	0.230	0.300	2-12mm dia	3-12mm dia	8mm @ 150 c/c
14	PB14	01	1.500	0.230	0.300	2-12mm dia	3-12mm dia	8mm @ 150 c/c
15	PB15	01	1.405	0.230	0.300	2-12mm dia	3-12mm dia	8mm @ 150 c/c
16	PB16	02	4.660	0.230	0.300	2-12mm dia	3-12mm dia	8mm @ 150 c/c
17	PB17	01	3.750	0.230	0.300	2-12mm dia	3-12mm dia	8mm @ 150 c/c

Section officer
Mahudha section

Deputy Executive Engineer
Drainage Sub Division
Mahudha

Executive Engineer
Shedhi Irrigation Division
Nadiad